



# St Mary's Dio Parent Heads up

Term: 2 Week: 2 Commencing: **Monday 7 May 2018**

Details	
Monday	<ul style="list-style-type: none"> <li>• <b>Permission Slips Due:</b> Winter Sport Contracts for Football, Hockey and Basketball</li> <li>• Invited Primary Schools attend Full Dress Rehearsal of Production</li> <li>• 3.30 – 4.30pm St Mary's <b>Junior</b> Basketball practice – gym</li> <li>• 3.30 – 4.30pm Football Practice on school field</li> <li>• 7.30-8.30 Hostel Activities in Gym</li> </ul>
Tuesday	<ul style="list-style-type: none"> <li>• 7.15am – 8.15am Hockey Practice at Stratford Turf</li> <li>• 8am – 8.45am – Badminton Club (tbc)</li> <li>• <b>GRIT – time for rest, reflection, recreation which all equal RESULTS</b></li> <li>• <b>All students to be in school by 9am unless attending activities</b></li> <li>• <b>Production Rehearsal 8.30am – 9.00am – Whole Cast Singing+</b></li> <li>• <b>7pm - Evening Performance “Thoroughly Modern Millie”</b></li> <li>• 3.30 – 4.30pm Netball Practice in Gym – Development and Junior A</li> <li>• <b>Hockey Game: No game due to Production</b></li> </ul>
Wednesday	<ul style="list-style-type: none"> <li>• <b>7pm - Evening Performance “Thoroughly Modern Millie”</b></li> <li>• <b>Football game: No game due to production</b></li> <li>• 3.30 – 4.30pm Netball Practice in Gym – Blue</li> <li>• 4.30 – 5.30pm Netball Practice in Gym – A</li> <li>• 4pm – 5pm Hostel Activities in Gym</li> </ul>
Thursday	<ul style="list-style-type: none"> <li>• Whole School Cross Country</li> <li>• 3.30 – 4.30pm St Mary's Basketball practice – gym</li> <li>• 7.30-8.30 Hostel Activities in Gym</li> </ul>
Friday	<ul style="list-style-type: none"> <li>• <b>7pm - Evening Performance “Thoroughly Modern Millie”</b></li> </ul>
Saturday	<ul style="list-style-type: none"> <li>• <b>3pm - Matinee Performance “Thoroughly Modern Millie”</b></li> <li>• <b>7pm - Evening Performance “Thoroughly Modern Millie”</b></li> </ul>



Weekend Details			
Saturday	<ul style="list-style-type: none"> <li>• <b>Saturday Netball Games: Games for end of week 1 Term 2- 5 May 2<sup>nd</sup> Round of Grading:</b></li> </ul>		
	<b>TEAM</b>	<b>TIME</b>	<b>COURT</b>
	• St Mary's A v Steelformers A	11.00	1
	• St Mary's B (Development) v SHS 3A	10.00am	3
	• St Mary's Blue v SHS Hurricanes	11.00	3
	• St Mary's Junior A v SHS Rebels	12pm	2
	<b>Games for end of week 2 Term 2 – 12 May 2018</b>		
	<b>TEAM</b>	<b>TIME</b>	<b>COURT</b>
	• St Mary's A v Eltham Stylistics	10.00am	1
	• St Mary's B (Development) No game this week	BYE	BYE
• St Mary's Junior A v SHS Tigers	11.00am	3	
• St Mary's Blue v Steelformers Sopranos	12pm	6	
<b>DRAWS ARE SUBJECT TO CHANGE – Please check the Netball Taranaki Website</b>			
Sunday 13 May			

**St Mary's Diocesan School** is looking for families who would be interested in sharing their home with an international student. It is a wonderful opportunity to offer a girl a positive kiwi life experience and maybe gain a life-long extended family member.

Students who are in NZ for the school year board in our hostel and go to their 'NZ family home' two weekends each term, and for the two-week school holidays in April, July and October. We also enrol international students on a short term/number of weeks' basis, and some of these girls ask for full homestay.

We are looking for families to either be the 'main homestay' or to be a 'back-up option' if a family is for some reason unable to host their student anytime.

Do you have a spare bedroom and think you might enjoy being part of our Homestay Family team?

If you would like to talk about this as a possibility for your family please either phone the Homestay Coordinator,

Leslev Sutherland on 027 316 0595 or St. Mary's School office on 06 765 5333



## Important Up-Coming Calendar Dates

Tuesday 15 May	<ul style="list-style-type: none"> <li>• Y12 Outdoor Education Overnight trip (15+16 May)</li> <li>• Y.E.S Oral Heats</li> </ul>
Tuesday 29 May	<ul style="list-style-type: none"> <li>• School Photos</li> </ul>
Thursday 31 May	<ul style="list-style-type: none"> <li>• Teacher Only Day</li> </ul>
Wednesday 30 May 5.30pm – Monday 4 June 4pm	<ul style="list-style-type: none"> <li>• <b>EXEAT WEEKEND – Teacher only day plus extra-long Queens Birthday weekend</b></li> <li>• Boarding house closes: 5.30pm Wednesday 30 May</li> <li>• Boarding House re-opens: 4.00pm Monday 4 June (Queens Birthday Monday)</li> <li>• All students returning Monday evening need to be on site by 8pm or have phoned the boarding house if they are going to be late. Students arriving before dinner time need to remember to bring their dinner with them.</li> </ul>
Monday 4 June	<ul style="list-style-type: none"> <li>• <b>All students to return in Winter Uniform</b></li> </ul>
Wednesday 6 June Friday 8 June	<ul style="list-style-type: none"> <li>• Visiting Writers Workshops for selected students</li> </ul>
Thursday 7 June	<ul style="list-style-type: none"> <li>• Excel School of Performing Arts Visit and Workshops for selected students</li> </ul>
Tuesday 12 June – Friday 15 June	<ul style="list-style-type: none"> <li>• Senior Exams</li> </ul>
Friday 15 June 5.30pm – Sunday 17 June 4pm	<ul style="list-style-type: none"> <li>• <b>EXEAT WEEKEND</b></li> <li>• Boarding house closes: 5.30pm Friday 15 June</li> <li>• Boarding House re-opens: 4.00pm Sunday 17 June</li> <li>• All students returning Sunday evening need to be on site by 8pm or have phoned the boarding house if they are going to be late. Students arriving before dinner time need to remember to bring their dinner with them.</li> </ul>
Thursday 21 June	<ul style="list-style-type: none"> <li>• Annual Sports Exchange with Whanganui Girls College – Hosting <ul style="list-style-type: none"> <li>▪ Selected Teams to be confirmed</li> </ul> </li> </ul>
Sunday 24 June	<ul style="list-style-type: none"> <li>• Holy Trinity Church Service <ul style="list-style-type: none"> <li>▪ Whole school service, <b>10am start</b>, Holy Trinity Church Stratford.</li> <li>▪ <i>Any families who wish to apply for dispensation to not attend this service, need to apply in writing to the Principal.</i></li> </ul> </li> </ul>



## Important Up-Coming Calendar Dates

Thursday 28 June	<ul style="list-style-type: none"><li>• Sports Exchange with St Peters College Palmerston North<ul style="list-style-type: none"><li>▪ Selected teams to be confirmed</li></ul></li></ul>
Wednesday 4 July	<ul style="list-style-type: none"><li>• 3.30pm Reports available for collection from</li></ul>
Thursday 5 July	<ul style="list-style-type: none"><li>• House Music 2018<ul style="list-style-type: none"><li>▪ Venue to be confirmed</li></ul></li></ul>
Friday 6 July	<ul style="list-style-type: none"><li>• Teacher Only Day – to be confirmed</li><li>• End of term 2</li></ul>

### PTA - Firewood Silent Auction

The PTA are pleased to have once again received a very generous donation of firewood which we are now offering out to school families and anyone else you know that might be interested.

The firewood is 1.6 cubic meters of dry split Macrocarpa with free delivery to Stratford or Hawera. Delivery elsewhere by negotiation.

Email or telephone your price to Sandra Collins at the school office 06 765 5333  
[sandrac@stmarysstratford.school.nz](mailto:sandrac@stmarysstratford.school.nz) by 12 noon Friday 18 May.

### "Thoroughly Modern Millie"

Cake Raffle \$2.00 per ticket

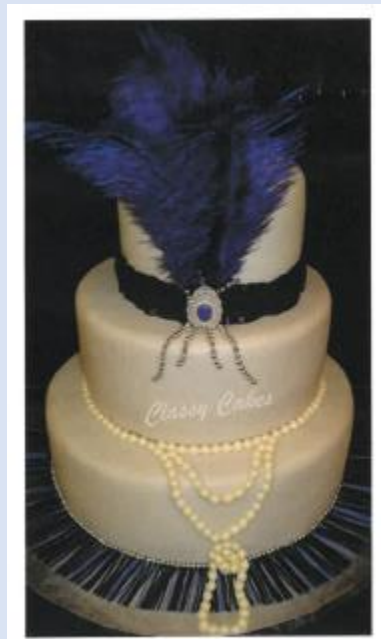
Tickets available at the show

OR

From the school office

Will be drawn on closing night

- as shown in photo and valued at \$250.00
- **Credit to Julie Johnson -**
  - *St Mary's incredibly talented Librarian*





THOROUGHLY MODERN  
**millie** JR



CALL THE SCHOOL OFFICE  
**(7655333)**  
FOR BOOKINGS